

STOCKING DANKO FLATBED

QRF-84CA

ALUMINUM FLATBED

The flatbed shall be designed to mount on a 84" cab to axle chassis with dual rear wheels. The deck shall measure approximately 100" wide x 132" long.

The frame shall consist of 2" x 6" x 1/4" wall channel and 2" x 2" x 1/4" wall support angles. There shall be a minimum of seven 2" extruded aluminum tubular cross members extending the full width of the deck to support selected equipment, compartments, and water tank, etc.

The left and right sides of the flatbed shall consist of 5" extruded aluminum channel and the deck shall be constructed with a combination of .125" aluminum treadplate and .125" aluminum NFPA embossed treadplate.

The flatbed shall be designed to be fastened to the chassis frame in a minimum of six locations using heavy duty u-bolts.

There shall be two (2) spring loaded and four (4) U-bolts supplied for mounting.

Two (2), mud flaps shall be supplied and mounted one on each side behind the rear wheels.

The body shall carry a (7) seven-year structural warranty.

HEADACHE RACK

The body shall have an aluminum headache rack at the front of the flatbed to protect the rear of the chassis cab.

GRASS FIRE SAFETY PLATFORM(S)

The front corners of the flatbed directly behind the chassis cab shall be recessed to provide grassfighting platforms, one on each side of the bed. There shall be an aluminum bulkhead around the platforms to provide protection for the firefighters.

There shall be two (2), aluminum safety gates constructed of rectangular tubing and mounted, one in each grass fighting platform entrance with a continuous style hinge. The safety gates will swing in and shall be equipped with pneumatic shock to hold the gate in the open or closed position. A safety stop shall be provided to prevent the gate from swinging out past the body.

REAR STEP; BOLT MOUNT

The rear step framework shall be constructed, with 3" channel iron and bolted to the chassis frame rails at the rear. The stepping surface shall be steel with a punched surface, approximately 8" in depth and 34" wide, centered with the body. The steps and rails shall be painted black in color.

STOCKING DANKO FLATBED

QRF-84CA

HANDRAILS

Handrails to be round extruded aluminum with slip resistant rubber inserts. The handrail brackets to be brass, chrome plated and fastened to the body with stainless steel bolts. The hand rails shall be located in the following area(s):

Two (2), handrails shall be supplied and located one in each grass fighting platform.

12-VOLT ELECTRICAL

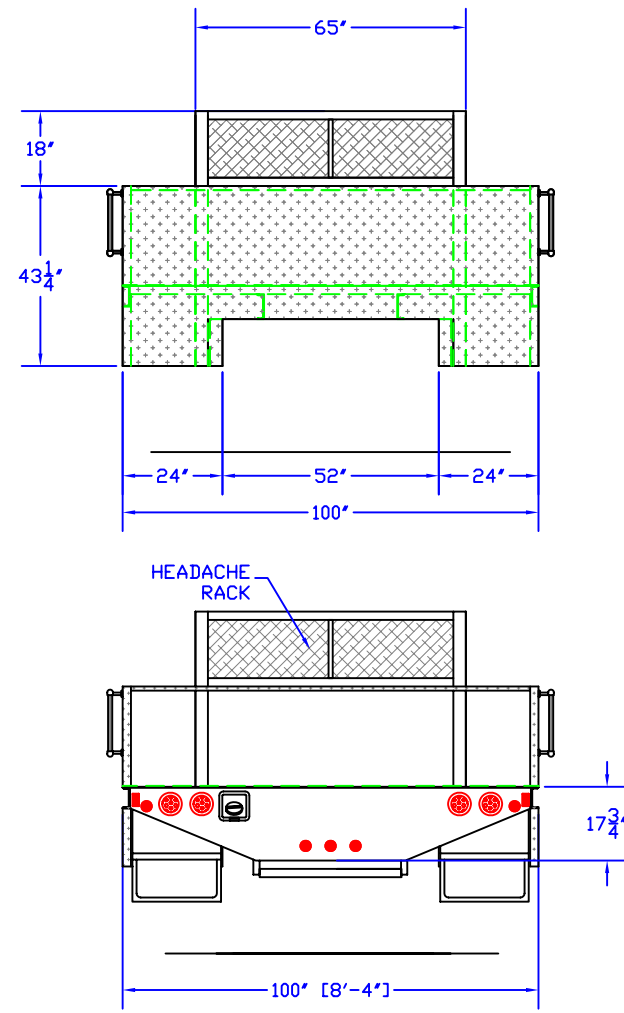
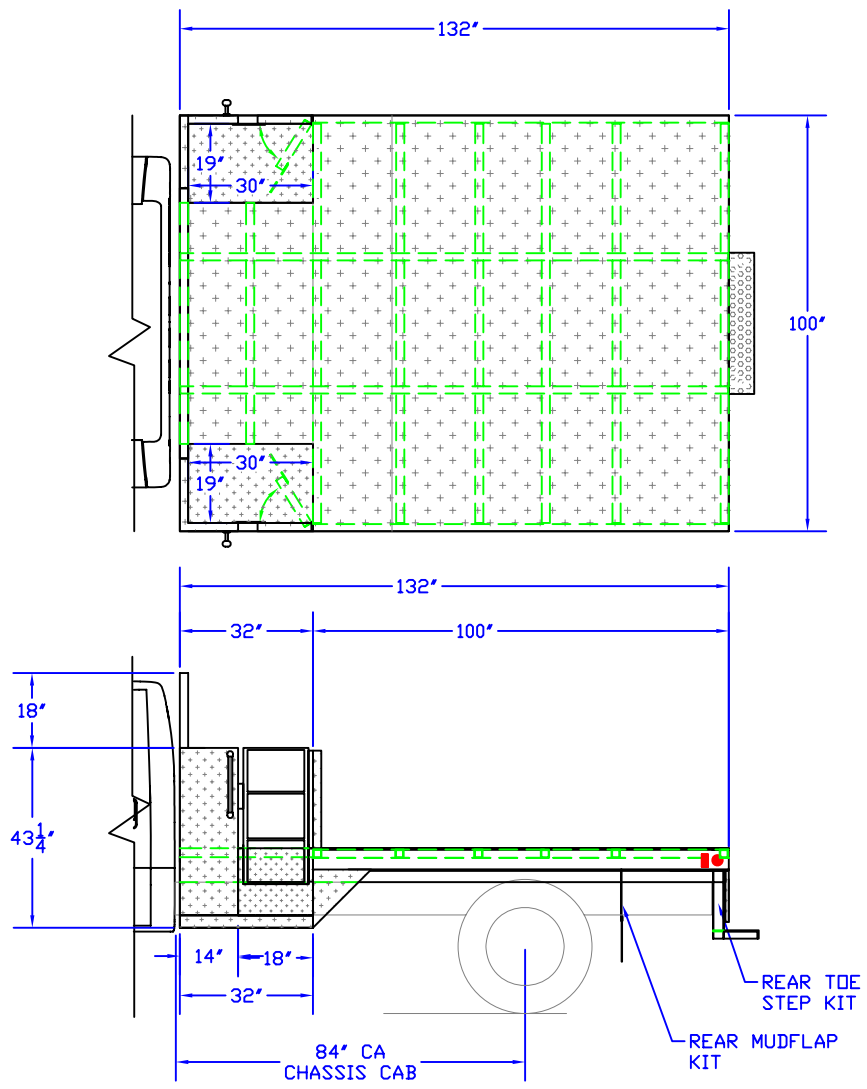
All electrical equipment to be installed with high temperature, copper, multi-strand, crosslink-coated wire. Wiring to be colored coded and function labeled every 3" end to end. All wiring shall be protected by automatic reset circuit breaker(s), and enclosed in a protective loom throughout the system, with rubber grommets where the wiring passes through module walls.

The rear combination brake, turn, and stop tail lights to be LED 4" round with red lens.

The rear back-up lights to be LED 4" round with clear lens. The lights to be connected to the transmission reverse switch.

Clearance lights and reflectors, to comply with ICC regulations, one on each side and rear corner of the apparatus body and a triple red light cluster recessed at the rear center of the body for a total of seven clearance lights.

A lighted license plate bracket shall be mounted at the rear of the apparatus.



ALUMINUM FLATBED



PUMP: N/A
 TANK: N/A
 FOAM: N/A
 BODY: 132" Aluminum Flatbed
 CHASSIS: N/A

ID: QRF-84CA
 DRAWN BY: NJD
 SCALE: 1/4" = 1'

QRF-84CA
 FLATBED

DIMENSIONS SHOWN ARE APPROXIMATE AND SUBJECT TO CHANGE AS MAY BE FOUND NECESSARY DURING CONSTRUCTION. MINOR DETAILS MAY NOT BE SHOWN TO RETAIN CLARITY WITHIN THE DRAWING. THE DRAWING IS FOR REFERENCE PURPOSES ONLY. SPECIFICATIONS SHALL BE THE FINAL AUTHORITY OF WHAT IS SUPPLIED ON THE APPARATUS.

DATE: 12/23/2009
 PAGE 1 OF 1

FILE NAME: Clients\QR Flatbed\QRF-84CA Stock Flatbed

DANKO EMERGENCY EQUIPMENT CO.
 SNYDER, NEBRASKA